

Barco portacontenedores

Tipo panamax

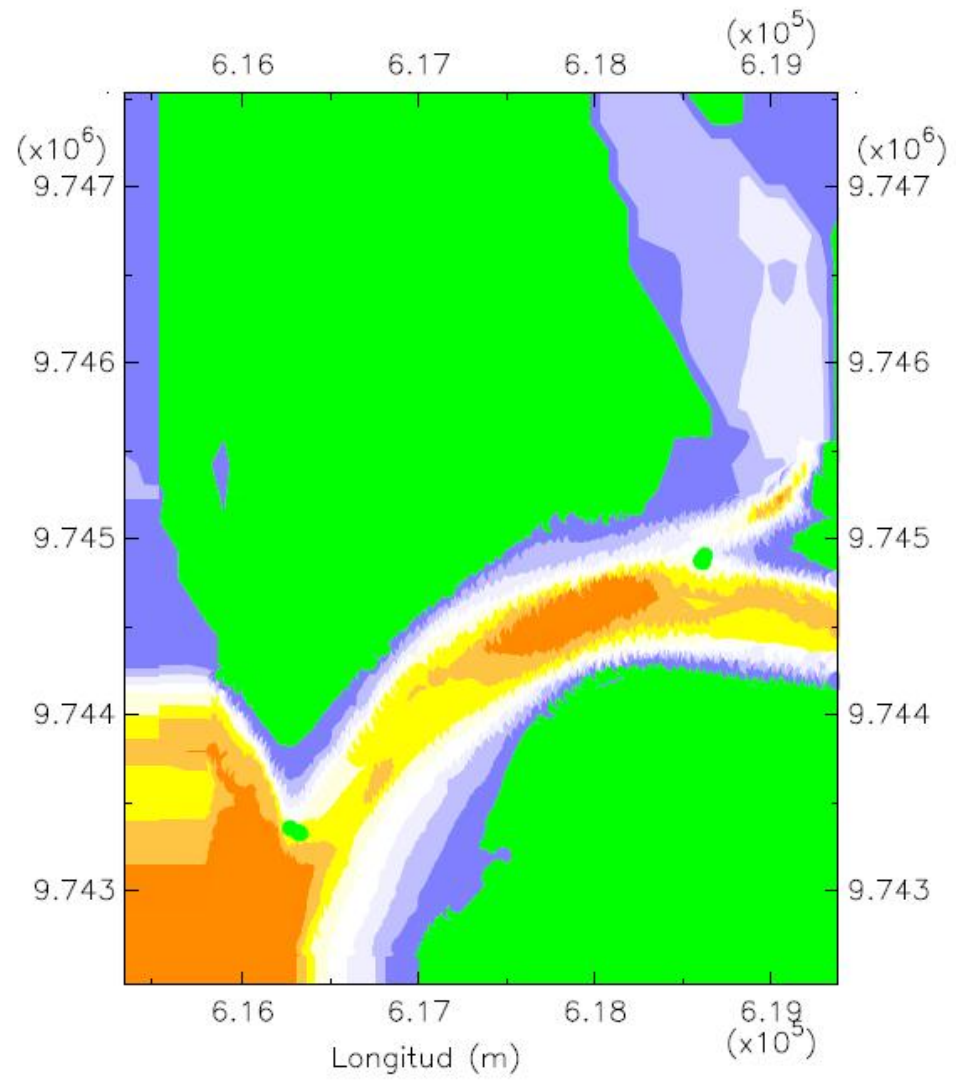
Eslora: 289 m

Manga: 32.20 m

Calado: 11.60 m

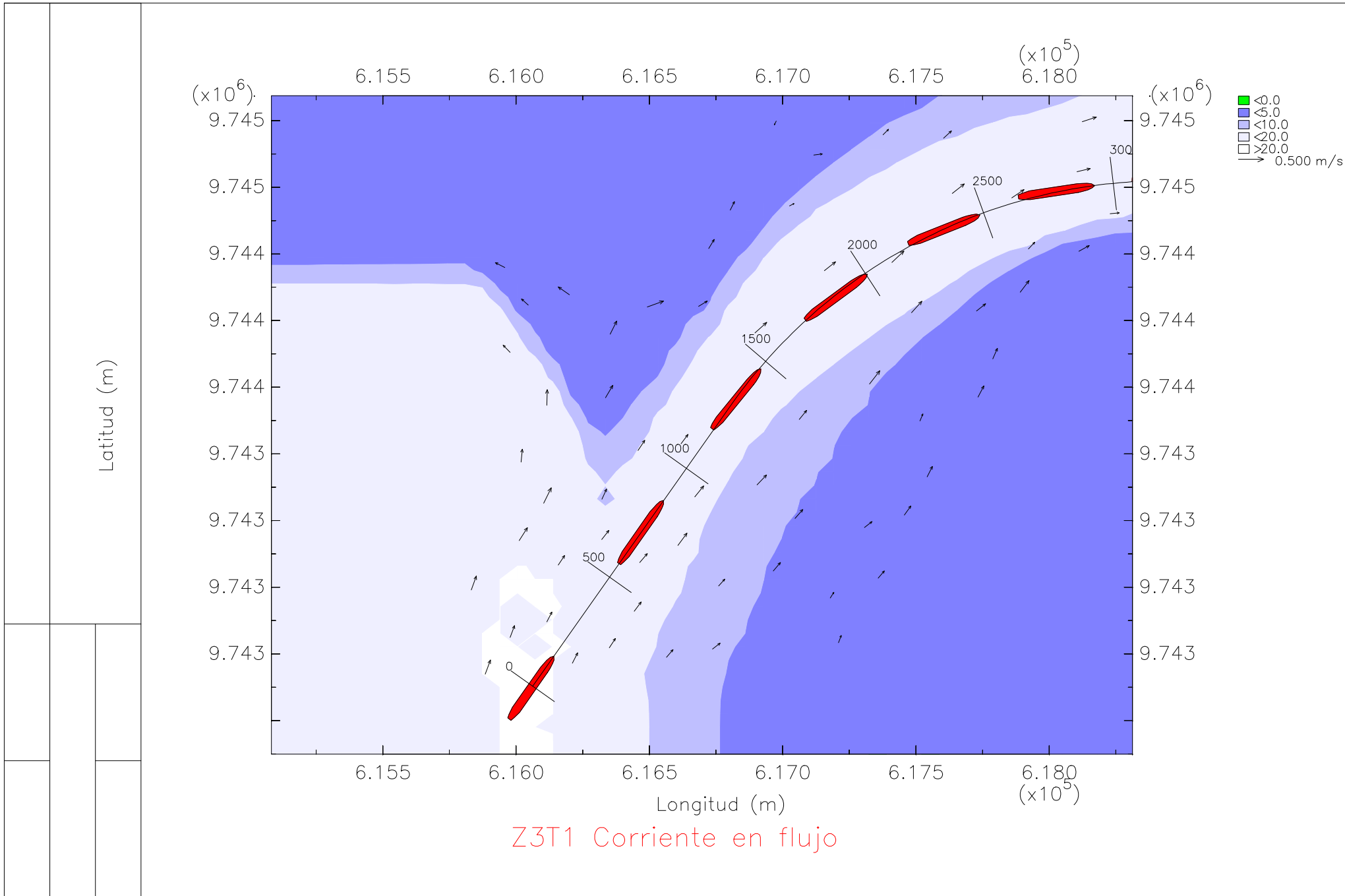
En la zona 3, tramo 1

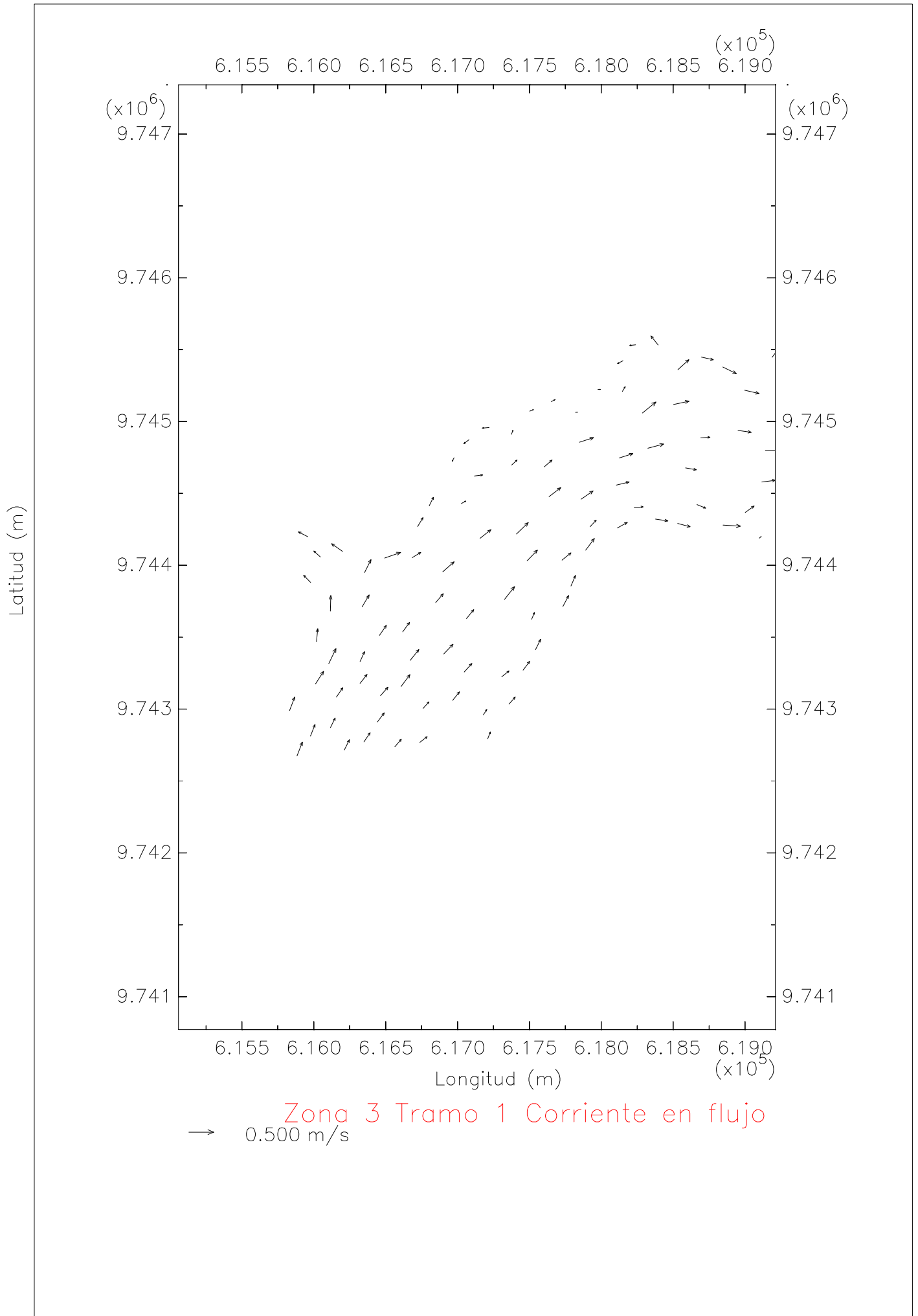
Bajo condiciones de llenante

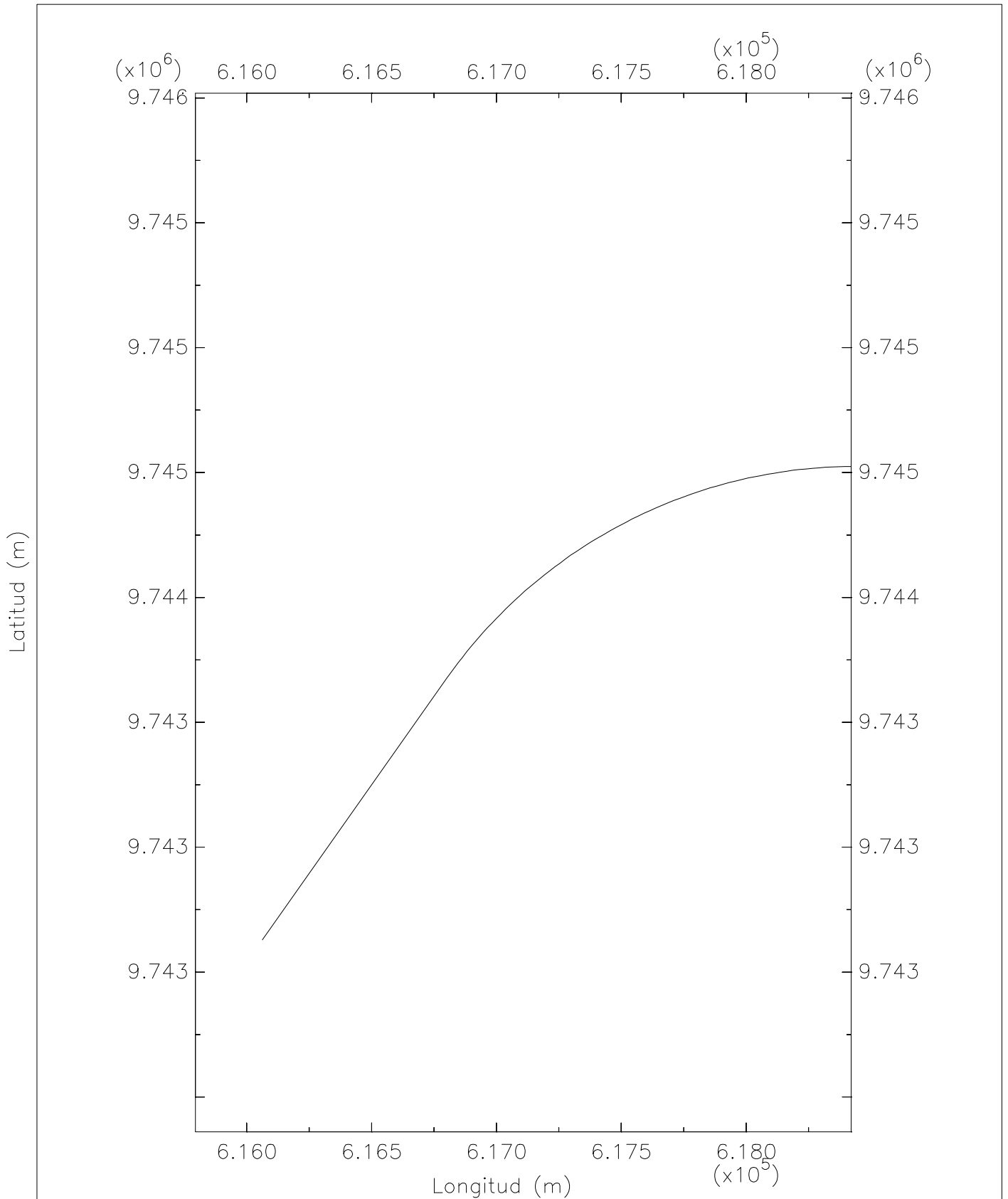


Zona 3 Tramo 1 Profundidad

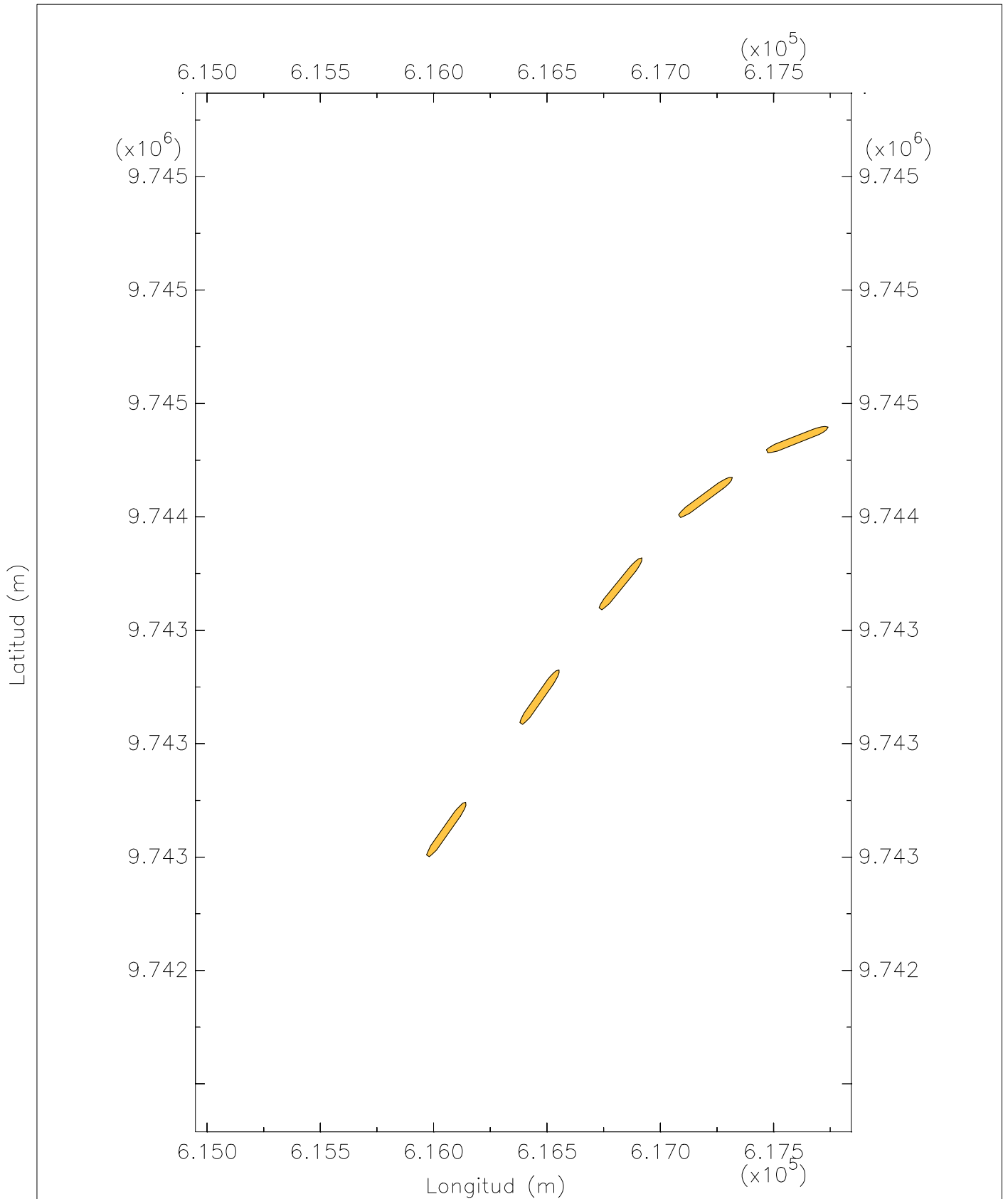
- | | |
|--|--|
| ■ < 2.0 | ■ < 12.0 |
| ■ < 4.0 | ■ < 14.0 |
| ■ < 6.0 | ■ < 16.0 |
| ■ < 8.0 | ■ < 18.0 |
| ■ < 10.0 | ■ > 18.0 |





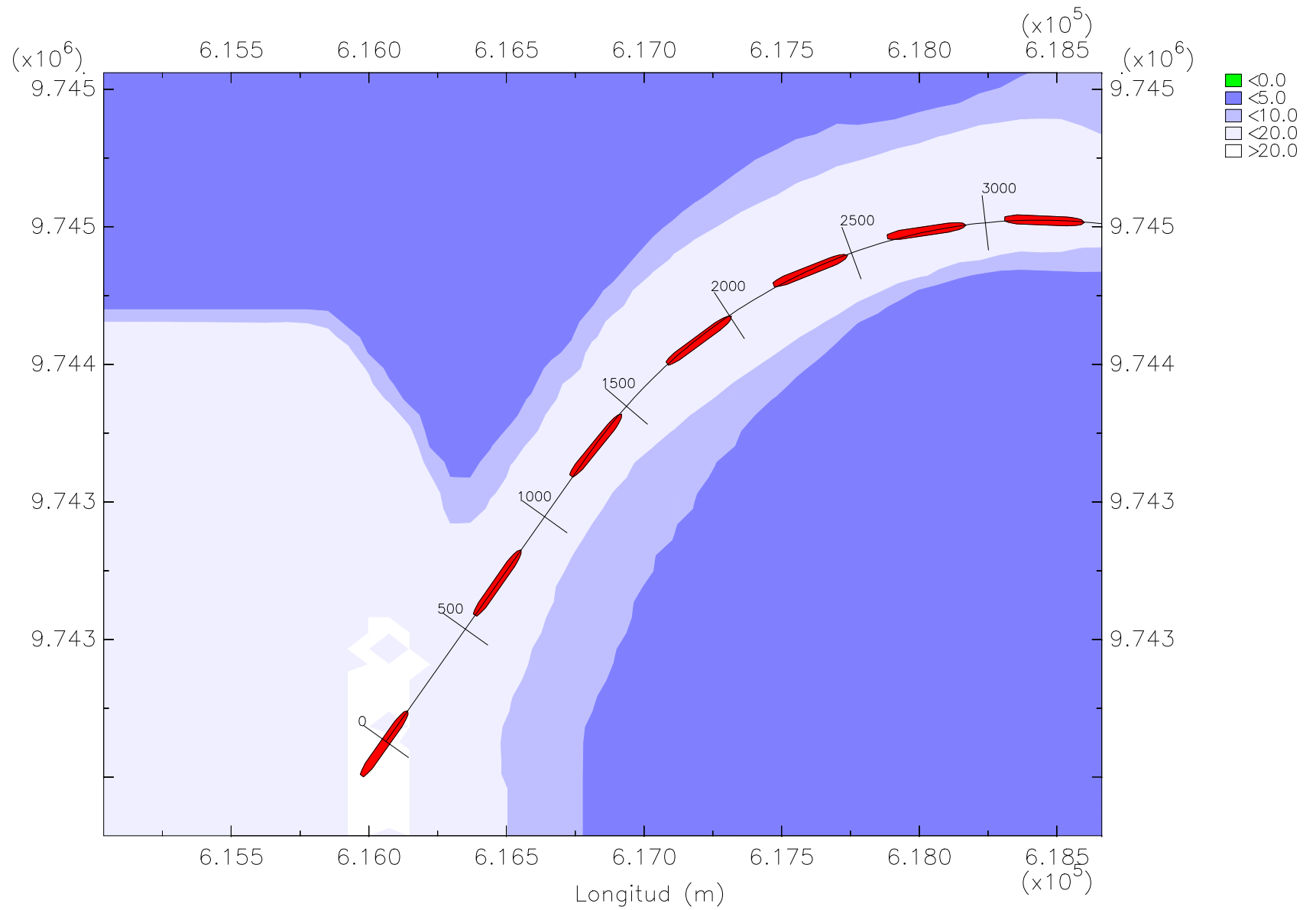


Zona 3 Tramo 1 Eje del canal



Z3T1 Trayectoria del barco de portacontenedores panamax

Latitud (m)



Z3T1 Trayectoria del buque de portacontenedores panamax en flujo